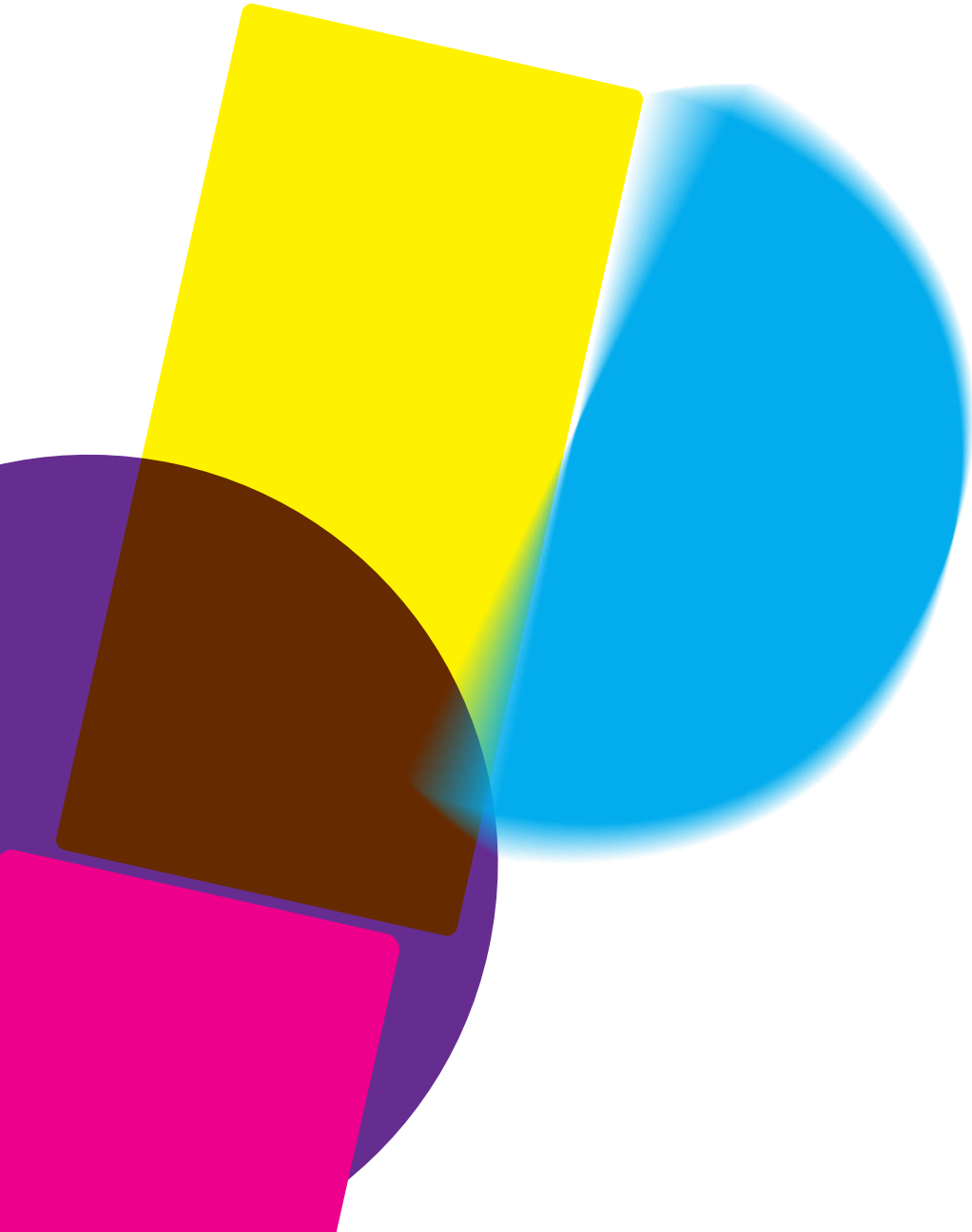




Melbourne  
Prize for  
Urban Sculpture  
2008

Entry Form  
& Information

[www.melbourneprizetrust.org](http://www.melbourneprizetrust.org)





## Entry Form & Information

The Melbourne Prize Trust, in conjunction with the Committee for Melbourne and our partners, have pleasure in offering the Melbourne Prize for Urban Sculpture 2008.

The objective of the Prize is to recognise and reward excellence and talent in urban sculpture.

The Melbourne Prize for Urban Sculpture 2008, which is open to Victorian residents, will raise awareness of our abundant creative resources. It highlights the importance of the aesthetic quality and liveability of the urban environment and its relationship with arts and culture.

The Prize positions Melbourne in the forefront of creating opportunities for sculptors. It is generously supported by public, private and corporate partnerships.

In November, Federation Square will become a unique exhibition space for the finalist's work. The free two-week exhibition will provide a public display, in the heart of the city, of the creativity of Victoria's sculptors.

Of the finalist's exhibited at Federation Square for the Melbourne Prize for Urban Sculpture 2005, a number of works were either sold, commissioned in the CBD or sited for temporary display.

For further information please visit [www.melbourneprizetrust.org](http://www.melbourneprizetrust.org)

Yours sincerely

A handwritten signature in black ink, appearing to read 'Simon H Warrender'.

Simon H Warrender  
Founder and Executive Director  
Melbourne Prize Trust

### About the Melbourne Prize Trust and annual Melbourne Prize

The Melbourne Prize for Urban Sculpture 2008 is coordinated by the Melbourne Prize Trust, in conjunction with the Committee for Melbourne and the generous support of our partners and patrons.

The annual Melbourne Prize provides opportunities for artist and increases the public's exposure and access to the creative talent in our community. Identifying the Prize with the city enhances Melbourne's position as a cultural hub.

The annual Melbourne Prize, launched in 2005, was created to meet the objectives of the Melbourne Prize Trust. These are to recognise and reward excellence and talent, to inspire creative development and to enrich public life. The aim of the Prize is to provide opportunities for professional development, overseas travel and financial incentives to allow winners to develop their creative work.

The annual Melbourne Prize engages with the public through an exhibition displaying the work of the finalists. The event is held each November at Federation Square.

The Prize is funded by a collaboration of public, corporate and private support, via the Melbourne Prize Trust and tax-deductible Melbourne Prize Fund.

The annual Melbourne Prize is the prize of the city for the city. In most of the sectors of focus, the Prize is the most valuable of its kind in Australia. The Prize continues its three-year cycle:

Melbourne Prize for Urban Sculpture 2008  
Melbourne Prize for Literature 2009  
Melbourne Prize for Music 2010

The cycle commences again with the Melbourne Prize for Urban Sculpture 2011.

The Committee for Melbourne, with its member organisations, has played a central role in the Trust's establishment. The Committee, founded in 1985, is a private organisation committed to Melbourne's future development. In supporting the Trust, the Committee's goal is to enhance Melbourne as a business and cultural capital and, in doing so, secure its future as a city of international standing.

The Melbourne Prize Trust is an Income Tax Exempt Charity listed on the Federal Government's Register of Cultural Organisations with Deductible Gift Recipient status.

The origin of the Trust dates back to the establishment of the children's garden, at the Royal Botanic Gardens Melbourne and commissioning in 2000 of its centrepiece sculpture of *The Magic Pudding* characters. Proceeds from the sale of bronze miniatures of this landmark sculpture support the Melbourne Prize Trust.

For further information on the Melbourne Prize for Urban Sculpture 2008, the Melbourne Prize Trust or annual Melbourne Prize program, please visit our website at [www.melbourneprizetrust.org](http://www.melbourneprizetrust.org), call 03 9650 8800, or email [enquire@melbourneprizetrust.org](mailto:enquire@melbourneprizetrust.org).

## Prizes

### Melbourne Prize for Urban Sculpture 2008 \$60,000 cash

Comprising: \$30,000 cash, supported by the Lord Mayor's Charitable Fund; and \$30,000 cash for an International Travel Grant, supported by the City of Melbourne.

The International Travel Grant will provide the recipient with a free itinerary for international travel for career development.

### Professional Development Award

#### \$9,000 cash plus a 3-month artist in residence at Sculpture & Spatial Practice, VCA Art, University of Melbourne.

Supported by the Faculty of the Victorian College of the Arts, the Professional Development Award Trust and Fundere Fine Art Foundry. Funds for the Professional Development Award Trust were originally established by Mirvac.

### Civic Choice Award \$3,000 cash

Supported by J K Fasham Pty Ltd.

To be awarded from votes cast by visitors to the free public exhibition of finalists at Federation Square, held between 10 and 24 November 2008.

### Artist fee for finalists

\$2,000 (incl. GST) each will be provided to a maximum of ten finalists to assist with costs associated with the public exhibition.

Supported by Australian Art Resources and the Melbourne Prize Trust.

## Judges

### Awarding Committee

Dr Gerard Vaughan, Director,  
National Gallery of Victoria

Professor Andrea Hull AO, Director & Dean,  
Faculty of the Victorian College of the Arts,  
University of Melbourne

Professor Rob Adams AM, Director  
Design & Urban Environment,  
City of Melbourne

Robert Owen, Sculptor

### Advisory Group

Steven Cornwell, CEO, Cornwell Design

Dr Marie Sierra, Graduate Research Coordinator  
and Head, Sculpture & Spatial Practice,  
VCA Art, University of Melbourne

Fiona Hayward, Deputy Director,  
Sotheby's Australia

Max Delany, Artistic Director,  
Monash Museum of Art

Geoffrey Smith, Director & National Head  
of Art, Bonhams & Goodman

### Key dates

#### 17 March 2008

Entries open

#### 09 May 2008

Entries close

#### 10 June 2008

Finalists announced

#### 10 to 24 November 2008

Public exhibition of finalists

#### 12 November 2008

Prize recipients announced

#### 28 November 2008

Civic Choice Award recipient announced

## Eligibility

- Entrants must hold a tertiary qualification in fine art or have an established career as an artist.
- Entrants must be an Australian citizen or an Australian permanent resident and resident of the State of Victoria.
- Entries may be submitted individually or as a group. Galleries or commercial organisations may apply on behalf of an artist.
- Entries must be the original work of the artist(s) and have been completed within the past two years from the closing date of entries (9 May 2008).

## Judging Criteria

- Artistic merit of the entered work.
  - Entered work must be in a finished or propositional form. Consideration will be given to how the entered work is exhibited and its contribution to an engaging public exhibition at Federation Square; the exhibition space for finalists.
  - The entered work must aim to make a contribution to the cultural enrichment and aesthetic quality of the urban environment.
  - The entered work should address and be a free interpretation of sculpture in the urban landscape.
- A definition of urban sculpture by the Melbourne Prize Trust:
- Urban sculpture draws a link between the built environment, art and the various publics that compose the urban landscape. By engaging with the social fabric and the past, present or future of the urban environment, it contributes to an understanding, involvement and sense of place in urban culture.*
- Completion of support material.
  - As part of their support material, entrants must demonstrate how the Melbourne Prize for Urban Sculpture 2008 will benefit their career, should they win.

## General Information for entrants

- The Melbourne Prize for Urban Sculpture 2008 will be non-acquisitive.
- **An artist fee of \$2,000 (incl. GST)** each will be provided to a maximum of ten finalists to contribute to the costs incurred in exhibiting their work at Federation Square. All other costs associated with entering and exhibiting will be borne by the finalist.
- The recipients of the Melbourne Prize for Urban Sculpture 2008 and Professional Development Award will be announced on 12 November. The recipient of the Civic Choice Award will be announced on 28 November. All results will be published on [www.melbourneprizetrust.org](http://www.melbourneprizetrust.org) – see Key Dates.
- The Professional Development Award will be awarded to a finalist who may or may not be the recipient of the Melbourne Prize for Urban Sculpture 2008.
- The decisions of the Awarding Committee will be final and no correspondence will be entered into.
- Where the entry eligibility or other information has not been complied with, or in such other circumstance as the Awarding Committee determines, the Committee reserves the right not to accept an entry or award any prize/s.
- Copyright will remain with the artist. Artists must ensure they do not violate copyright of other work or seek to defame the character of any individual or group with their submitted work.
- The Melbourne Prize Trust reserves the right to publish photographs or videos of all finalist's entered work for publicity, catalogue, news and reviews and other promotional material, including promotion via the Internet.
- The Melbourne Prize Trust will acknowledge all images of artwork to the appropriate artist(s). Permission to use photographs of a finalist's work for any other purpose outside of the above will be discussed with the artist.

### Information to consider for entered work

The following information has been made available about the public exhibition of finalists, to be held at Federation Square in November. In entering the Prize, please ensure that the following eleven points are considered, in the event that an entered work is selected as a finalist for the exhibition at Federation Square.

#### The following information applies to all entered work, whether it is in a finished or propositional form.

- The public exhibition will be held at Federation Square between 10 and 24 November 2008. Entrants should consider Federation Square as the exhibition space.
- Consideration must be given to how an entered work will be exhibited at Federation Square and its contribution to an engaging public exhibition.
- A weight restriction of 500 kilograms per square metre applies in designated areas at Federation Square. No trucks, cars or utilities are allowed in the Square. Forklifts are permitted.
- The dimensions and material specifications of an entered work must be provided in the support material. Height restrictions exist at Federation Square.
- A work cannot impact on the access or egress throughout Federation Square, or obstruct access to any tenant or business.
- Entrants must specify, in the entry support material, a preferred site at which to exhibit the entered work.

#### A site map of Federation Square is available at [www.melbourneprizetrust.org](http://www.melbourneprizetrust.org), with the entry form.

- The entered work must take into consideration the uneven surfaces and varying levels at Federation Square and be fabricated to withstand exhibition in a public open space for a two-week period.

- The entered work must use materials that take into consideration public safety, durability and 24-hour display in a public open space. 24-hour security and CCTV are provided at Federation Square.
- A brief installation and removal plan for the exhibition must be provided in the support material.
- Installation equipment is available for hire at a reasonable cost from Federation Square.
- Securing an entered work at Federation Square must not impact on the structural integrity of the square.

#### Federation Square offers an inspirational exhibition space for finalists. Contact Alexia Higgs, Program Manager – Events on 03 9655 1913 for further information on exhibiting at Federation Square.

#### Support material

Please supply five (5) stapled, single-sided A4 copies of the following support material with your entry:

- Current resume – maximum one A4 page
- Title and description of the entered work and how it will be exhibited at Federation Square – maximum one A4 page.
- Nominate a site at Federation Square for exhibiting the entered work and provide a brief installation/removal plan – maximum one A4 page written description or basic drawing.
- A site map of Federation Square is available at [www.melbourneprizetrust.org](http://www.melbourneprizetrust.org), with the entry form.
- Maximum of three (colour) images of the entered work – each image on a single A4 page.
- A detailed specification of materials used in the entered work, including dimensions – maximum one A4 page.
- A description of how the Melbourne Prize for Urban Sculpture 2008, including the International Travel Grant, will contribute to the entrant's career development – maximum one A4 page.

### How to enter

- 1 Please read all entry information.
- 2 Complete the required support material.
- 3 Complete the entry form and attach a non-refundable entry fee of \$40 (incl. GST) by cheque or money order, made payable to the Melbourne Prize Trust.
- 4 Read, sign and date the entry declaration.
- 5 Enclose five (5) stapled, A4 single-sided copies of the support material, along with the completed entry form and attached entry fee and the entry declaration in a single-sided A4 envelope.

#### Entries must be received (in hard copy) at the Melbourne Prize Trust's address below by 5.30pm, Friday, 9 May 2008. Late entries cannot be accepted.

Melbourne Prize for Urban Sculpture 2008  
Melbourne Prize Trust  
Milton House Level 2  
25 Flinders Lane  
Melbourne VIC 3000

Please call the Melbourne Prize Trust on 03 9650 8800 for assistance with the entry process.

### Entry Checklist

Please ensure all the following items are included in a single A4 envelope.

Completed and signed entry form with entry fee (\$40 incl. GST) attached.

Signed and dated entry declaration.

Five (5) stapled, A4 single-sided copies of the following support material.

- Current resume
- Title and description of the entered work and description of how it will be exhibited
- Nominated exhibition site for the entered work at Federation Square and a brief installation/removal plan
- Three colour images of entered work
- Materials specification and dimensions
- A description of how the Melbourne Prize for Urban Sculpture 2008, including the International Travel Grant, will contribute to the entrant's career development

Please staple the entry fee to this entry form and attach it to the support material for the entry.

The Melbourne Prize Trust will keep your entry information in accordance with current privacy legislation.

(Mr/Mrs/Ms/Title) First name	Last name
Group name (where applicable)	
Title of entered work	Date of completion / /
Address	
Postcode	
Telephone (business hours)	
Mobile	
Email	

Please sign and date this entry declaration.

In signing this entry form I certify that:

- The submitted work is original and has been completed within two (2) years of the date of close of entries (9 May 2008).
- I have read and accept the entry information.
- I comply with the entry eligibility and am an Australian citizen or an Australian permanent resident and resident of the State of Victoria.
- I accept as final the decision of the Awarding Committee.
- I agree to be contacted in relation to my entry.

Signed \_\_\_\_\_ Date / / 2008

Founding Partners



Patron

Diana Gibson AO

Government Partner



Melbourne Prize for Urban Sculpture 2008 Partners



Exhibition & Event Partner



Media Communications



Professional Services



Print Partner



Website Development

littleirrepressiblewonton.com